

PROJECT :

# MEXICANO

Date :02 - 02 - 2022

Revise :2

Drawing No:0075 - 18

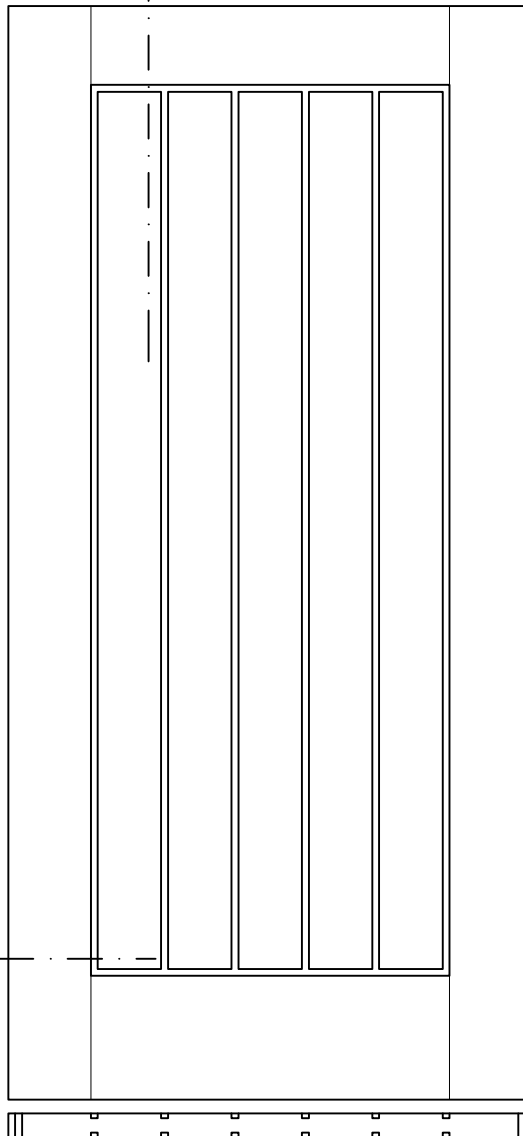
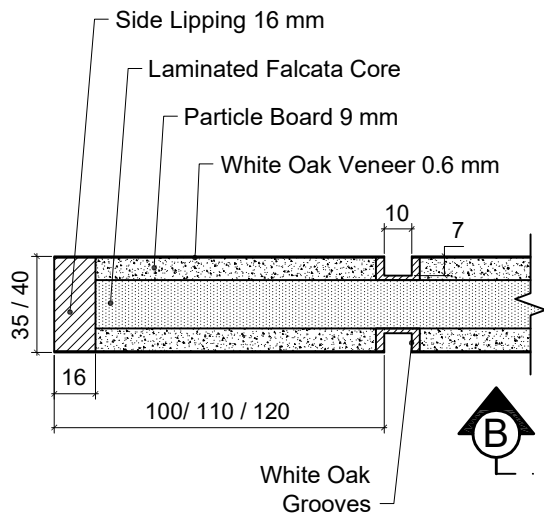
Door Specification :

Type : Minimalis Door

- Door Thickness	35 / 40 mm.
- Top Rail	115 / 125 mm.
- Middle Rail	- mm.
- Bottom Rail	180 mm.
- Stiles	100/ 110/ 120 mm.
- Muntins	- mm.
- Panel Thickness	- mm.

Veneer Specie :

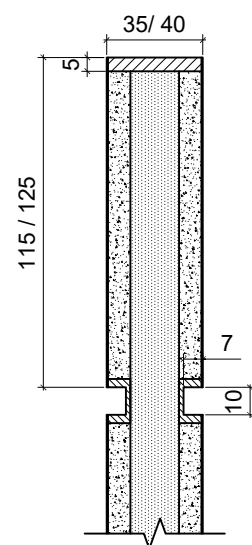
- White Oak



115	1448	180	1743
115	1519	180	1814
115	1528	180	1823
115	1660	180	1955
115	1686	180	1981
115	1713	180	2008
125	1727	180	2032
125	1735	180	2040

## Section : B

Scale 1 : 2.5



3 Slats	454	100	254	100
	457	100	257	100
4 Slats	526	100	326	100
	533	100	333	100
5 Slats	610	110	390	110
	683	120	443	120
	685	120	445	120
	686	120	446	120
	759	120	519	120
	760	120	520	120
	762	120	522	120
	838	120	598	120
	813	120	573	120
	626	110	406	110
	726	120	486	120
	711	120	471	120
	826	120	586	120
926	120	686	120	

## Section : A

Scale 1 : 2.5

APPROVED	Type :	Material : Wood	Unit : mm	Date : 04 - 07 - 2018
		Finishing :		Revise : 0
BUYER	Name :	ENGINEERING DOOR APPROVAL DRAWING		Drawing : Wibi
				Approved :
		Scale :	1 : 11	