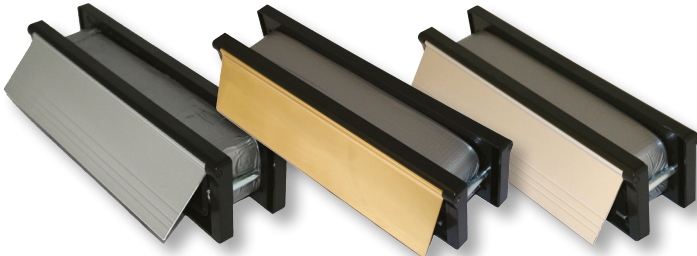


Defender Range - 30 minute fire rated



A stylish ABS framed, telescopic letterbox, with metal flaps and fitted with a high performance intumescent liner.

In the event of fire the intumescent liner expands rapidly and seals off the letterbox opening, preventing the spread of fire and smoke whilst maintaining the integrity of the fire door assembly.

Applications

- For use in FD30 fire doors
- New build or retro-fit applications

Features and Benefits

- Letterbox flaps open to 180°
- Smoke tested
- Acoustic tested achieving 32dB Rw
- Security tested to PAS 23/24
- Adjustable telescopic sleeve set to suit 40mm - 80mm door thickness
- Fitted with brush pile draught excluders
- Integral sound dampening bumpers
- Wide range of letter flap finishes
- Ergonomic curved edge design
- Fully sealed backplate.

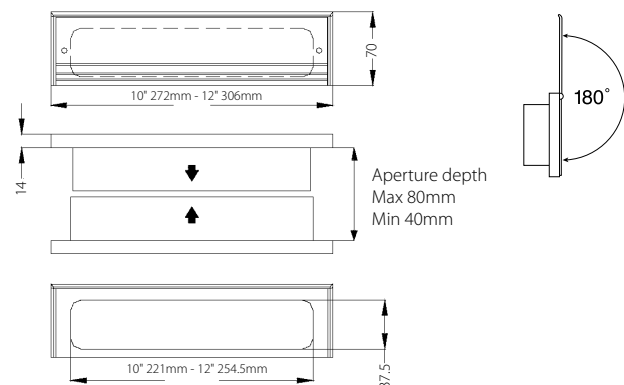
Finishes

The following finishes are available in 10" and 12":



Fitting Instructions

1. Measure the external dimensions of the central telescopic section (including the fitted intumescent liner) to ascertain the aperture cut-out
2. Carefully cut an aperture in the fire door leaf up to 1050mm from the bottom of the door. Please ensure that the aperture is a tight fit to allow the fixing of wood screws into the corner of the face plates
3. The face plate fitted with the integral draught excluders should be located to the internal face of the door
4. Locate the letter box into the cut aperture and secure using 4no. steel wood screws into each face plate
5. To maintain the fire proof integrity of the fire door ensure any gaps between the letter box and the door aperture are sealed using our intumescent sealant.



Testing

Fire Tested to BS 476 part 22: 1987, 30 minute rated

Smoke Tested to BS 476 Part 31/1: 1983

Acoustic Tested to BS EN ISO 140-3:1995 Achieving 32dB Rw

Security Tested to BS EN 13724 Clause 6.6.5

(Compliant within Scope of PAS 23/24)

Material Safety Data

Composition/Information on Ingredients

Chemical Nature: Thermoplastic element composition containing intercalated graphite in a synthetic compound with the addition of fillers and process oils. Contained with a rigid outer casing for aesthetic finish, supplied with an acrylic self adhesive backing.

Possible Hazards

Principle hazards: Not subject to decree of hazardous substances.
Critical hazard of Man and Environment: Not Applicable.

First Aid Measures

On skin contact: Not applicable.
On contact with eyes: Not applicable.
On ingestion: Not applicable.
If inhaled: Not applicable in solid state.

Fire Fighting Measures

Suitable Extinguishing Media: Water, foam, powders and dry extinguishing media.

Special Protective Equipment: Suitable forms of PPE (Personal protective equipment).

Avoid inhalation of smoke or fumes.

In the event of a fire, contact the appropriate emergency services for assistance.

Accidental Release Measures

Personal Precaution: In the event of a fire ensure sufficient ventilation.

Environmental Precaution: Do not discharge the product into drains or water courses, ensure materials are disposed of in accordance with Local Authority regulations and/or Government Legislation.

Method for cleaning up: No special measures necessary.

Handling and Storage

Handling: No special requirements.

Storage: Store dry in a cool place (not above 35c).

Exposure Controls and Personal Protection

Respiratory protection: Not applicable.

Hand Protection: Not applicable.

Eye Protection: Not applicable.

Skin Protection: Not applicable.

Physical and Chemical Properties

| | |
|---------|----------------------|
| Form: | Solid |
| Colour | All colours |
| Odour: | Acidic |
| Density | 1.3 specific gravity |

Stability and Reactivity

Conditions to be avoided: Thermal decomposition above 300c.

Hazardous decomposition Products: Thermal decomposition fumes contain Hydrogen Chloride. However, the activated graphite is effective at removing aromatic particles from smoke emissions.

Toxicological Information

Acute Toxicity: Not applicable in solid state.

Ecological Information

General Advice: Observe the legal provisions regarding the prevention of ground water and surface water as well as air. Do not discharge products into natural waters without pre-treatment.

Disposal Considerations

Recommendations: Disposal of by special means in accordance with local regulations e.g. suitable deposition.

Transport Information

Transport Hazards: No regulations apply for the transport of this material. Not classified as hazardous for road, rail, sea or air transport.

Regulatory Information

Labelling according to EEC directives:

| | |
|----------------------------------|----------------|
| National Legislation/Regulations | Not applicable |
| VbF Classifications | None |
| Water Hazard Class | Not applicable |

Additional Information

The information contained herein is based upon the present state of our knowledge. Recipients of our products must take responsibility for observing existing laws and regulations.