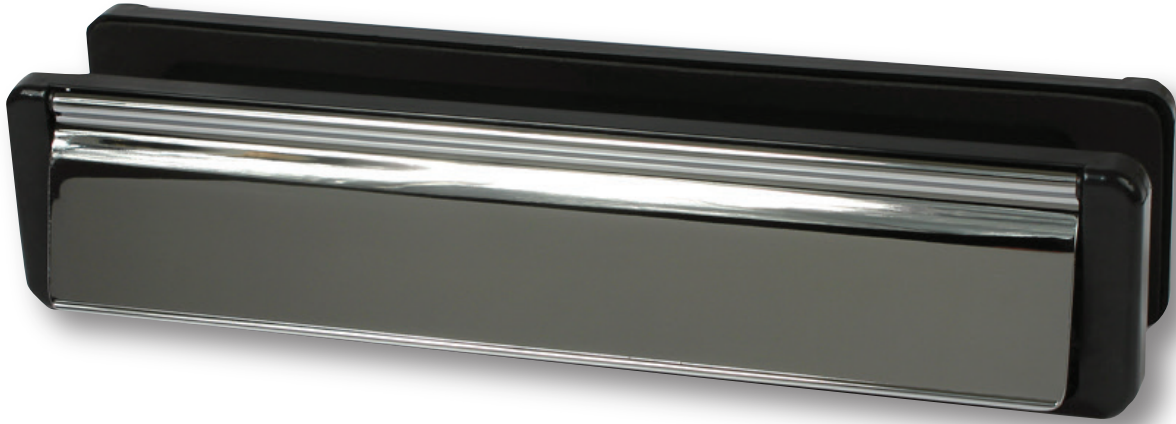
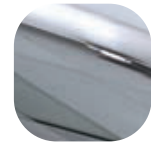


## Nu Mail Edge Letterplate



### Features

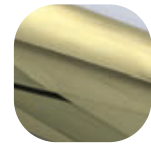
- Fully suited aluminium or die cast zinc flap and UV- safe black ABS frame**  
 Quality and durability you can see and feel
- Midrail and panel letterplate options to suit doors 20mm - 80mm thick**  
 Suits a range of doors
- Anti-snap flap opens to 180° with fully sprung return**  
 Easier to operate, no broken flaps, even with Sunday papers
- 12" letterplate with a 10" aperture**  
 Meets Royal Mail standards, will easily take A4 size post
- Secure through fixing ensures letterplate can only be removed from the inside of the house**  
 Prevents burglars gaining access to the cylinder internally
- Can be through fixed or face fixed**  
 Flexible according to fabricator preference
- Supplied with screw fixings**  
 Everything needed for installation included



Hardex Chrome



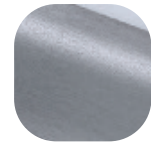
Hardex Bronze



Hardex Gold



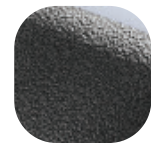
Black



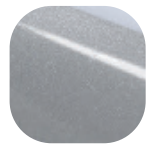
Hardex Graphite



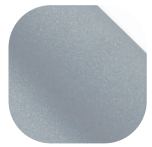
White



Antique Black



Silver



Premium Satin



## Nu Mail Edge Letterplate

### Ordering Details

#### Product

#### Nu Mail Edge Letterplate

Finish	Part No.	
	Panel (20-40)	Midrail (40-80)
Hardex Chrome	3A054	3A004
Hardex Bronze	3A056	3A006
Hardex Gold	3A058	3A008
Hardex Graphite	3A061	3A011
Antique Black	3A059	3A009
White	3A050	3A000
Black	3A051	3A001
Silver	3A052	3A002
Premium Satin	DLPNEPSA68	DLPNEPSMR68

### Technical Information

#### Corrosion resistance

Meets the requirements of BS EN 1670:2007 Grade 5 (480 hours)

#### Operation

Flap cycle tested to 20,000 cycles

Conforms to the requirements of BS EN 13724: 2002

#### Screws

Midrail version includes 2 x M5 x 50mm machine screws, 2 x M5 x 70mm machine screws and 2 screw guides

Panel version includes 2 x M5 x 28mm machine screws and 2 screw guides

### Material Specification

Flap:	High quality Zinc or Aluminium
Frame:	Black ABS
Coatings:	Hardex Chrome, Hardex Bronze, Hardex Gold, Hardex Graphite, Antique Black, Premium Satin, White, Black and Silver.

### Maintenance

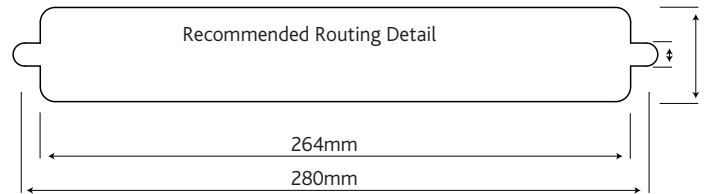
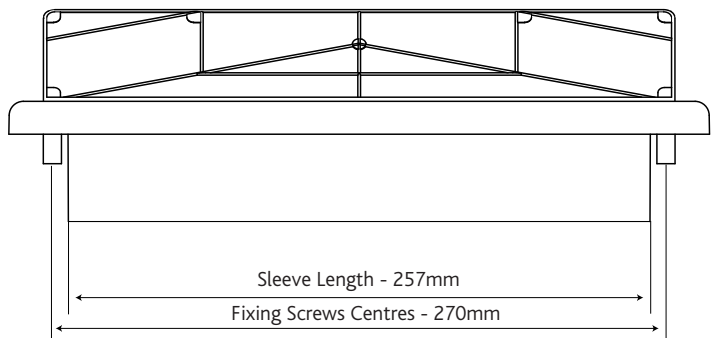
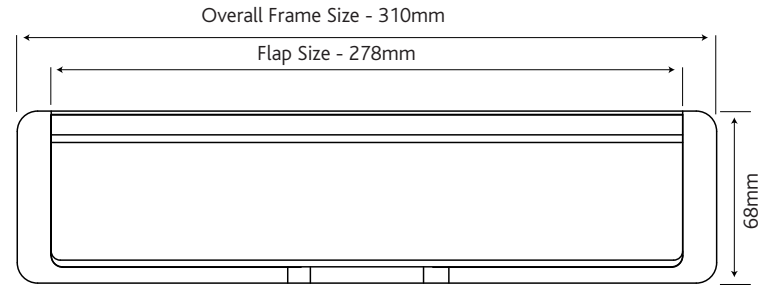
For continued protection of the quality finish and appearance, we advise routine cleaning of all our external hardware. We recommend wiping it with a clean cloth soaked in warm water and mild detergent every month. Please refrain from using heavy-duty cleaners, containing Chlorine or Potassium. Moving parts should also be lightly lubricated using a light non-acidic mineral oil (e.g., "3 in 1") at least twice per year. The product may need to be adjusted and fixings tightened to ensure a satisfactory operation. This procedure is particularly essential if products are used within a 25-mile radius of coastal areas or close proximity to building sites or large industrial areas, where more frequent cleaning may be required to prevent the accumulation of corrosive contaminants.

### Packaging

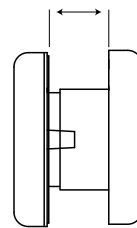
#### Nu Mail Edge Letterplate

Individually boxed with fixings and care instructions.

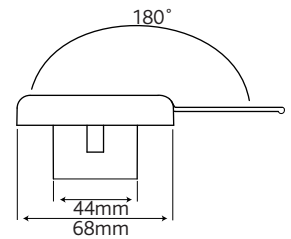
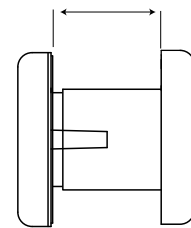
25 letterplates in an outer box.



Panel Sleeve Set  
20mm-40mm



Midrail Sleeve Set  
40mm-80mm



Fixing Screws Provided

All dimensions are in mm and are nominal.  
Fab&Fix reserves the right to change specification without notice.  
It is the responsibility of the door manufacturer to ensure that the finished product meets any required safety and performance specification.